

MONTHLY MEMBERSHIP PROGRESS REPORT

District 109 B

Results as of: 2/29/2024

GMT:

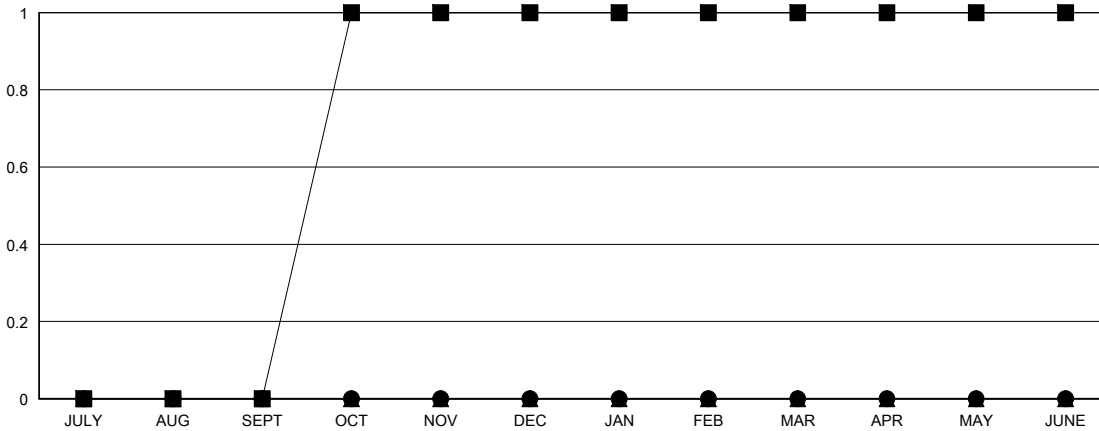
LOCATION ICELAND

GMT CA

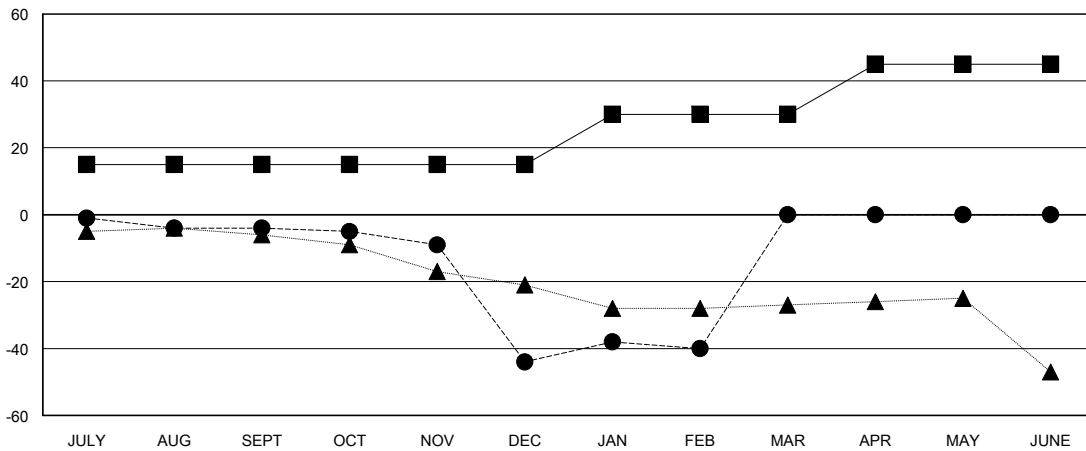
| Clubs | | | |
|-----------------------|---------------|-----------|---------------|
| RESULTS FOR 2023-2024 | | | |
| QUARTER | NEW CLUB GOAL | NEW CLUBS | DROPPED CLUBS |
| JULY/AUG/SEPT | 0 | 0 | 1 |
| OCT/NOV/DEC | 1 | 0 | 0 |
| JAN/FEB/MAR | 0 | 0 | 1 |
| APR/MAY/JUNE | 0 | 0 | 0 |

| Members | | | |
|-----------------------|------------------------|----------------------|--|
| RESULTS FOR 2023-2024 | | | |
| QUARTER | MEMBER GROWTH NET GOAL | MEMBER GROWTH ACTUAL | DROPPED MEMBERS ACTUAL (including transfers) |
| JULY/AUG/SEPT | 15 | 5 | 8 |
| OCT/NOV/DEC | 0 | 14 | 52 |
| JAN/FEB/MAR | 15 | 8 | 4 |
| APR/MAY/JUNE | 15 | 0 | 0 |

GOALS AND ACTUAL NEW CLUBS CUMULATIVE



GOALS AND ACTUAL MEMBERS CUMULATIVE



| | | | |
|-------------------------|--|---|-----------------------------------|
| DROPPED CLUBS: 2 | 12 CLUBS OF 31 ADDED 1 OR MORE NEW MEMBERS | GENDER DISTRIBUTION | |
| | | MALE 445 (65.54%) | FEMALE 234 (34.46%) |
| DROPPED MEMBERS | | CLICK HERE FOR CUMULATIVE MEMBERSHIP DATA | TOTAL FAMILY UNIT MEMBERS 12 |
| DECEASED 9 | CLUB CANCELLED 0 | | FAMILY MEMBERS PAYING HALF DUES 6 |
| OTHER 55 | TOTAL 64 | | |